



Vocal Music Virtual Learning

7/8 Choir

Music Literacy Review

May 14, 2020

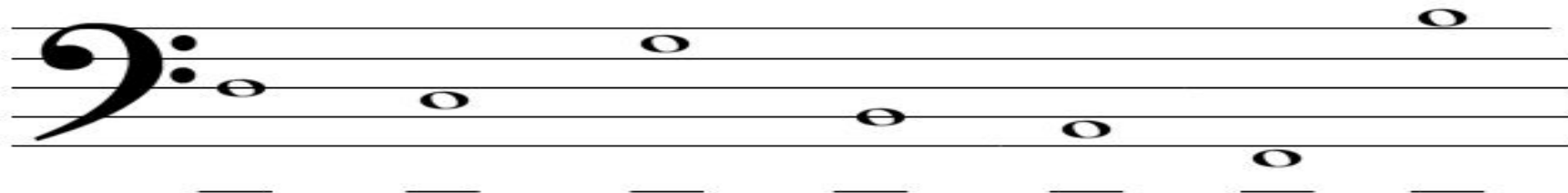
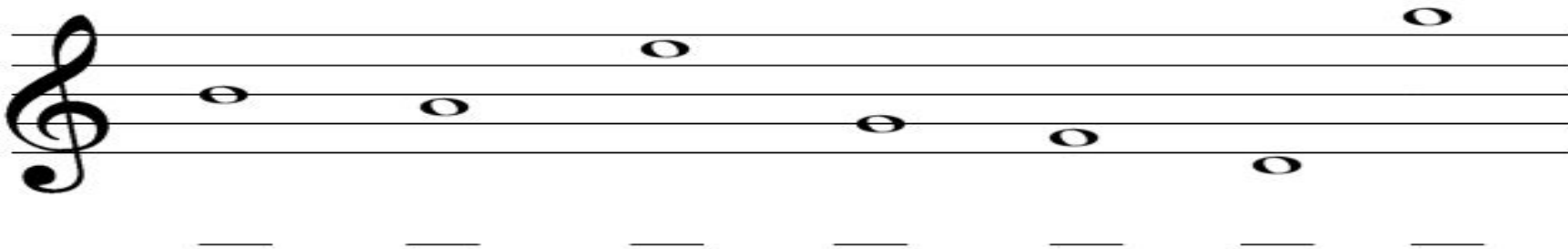


7/8 Choir
Lesson: 5/14/2020

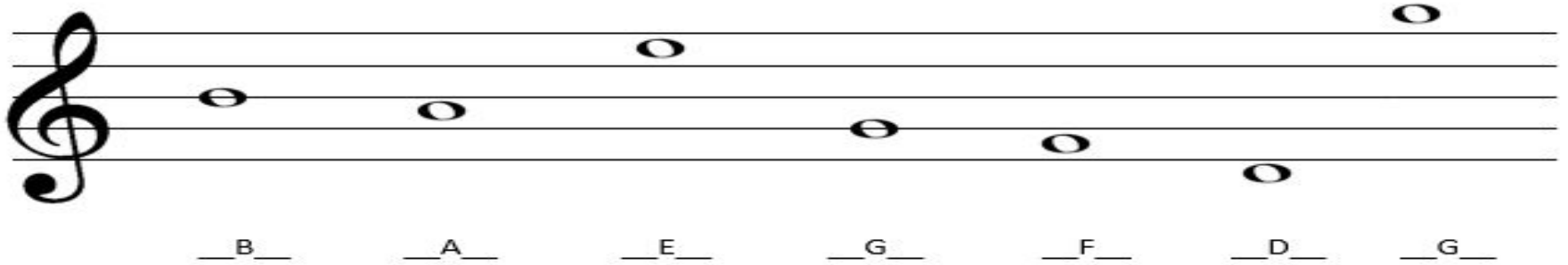
Objective/Learning Target:

Reviewing Note Identification, Accidentals, and Key Signatures

Warm Up Activity:
Identify the Lines and Spaces for Both Clefs

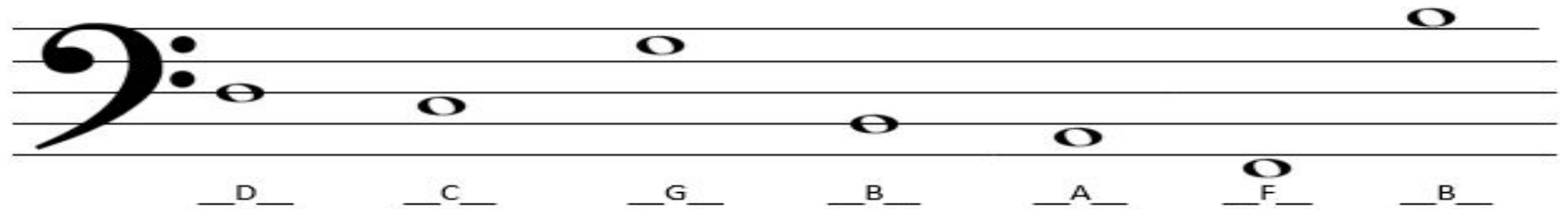


Answers:



A musical staff with a treble clef. It contains seven whole notes. Below each note is a label: B, A, E, G, F, D, G.

 B A E G F D G



A musical staff with a bass clef. It contains seven whole notes. Below each note is a label: D, C, G, B, A, F, B.

 D C G B A F B

Identify the Key Signatures
(don't forget to include accidentals where they're needed)



— — — — — — — —



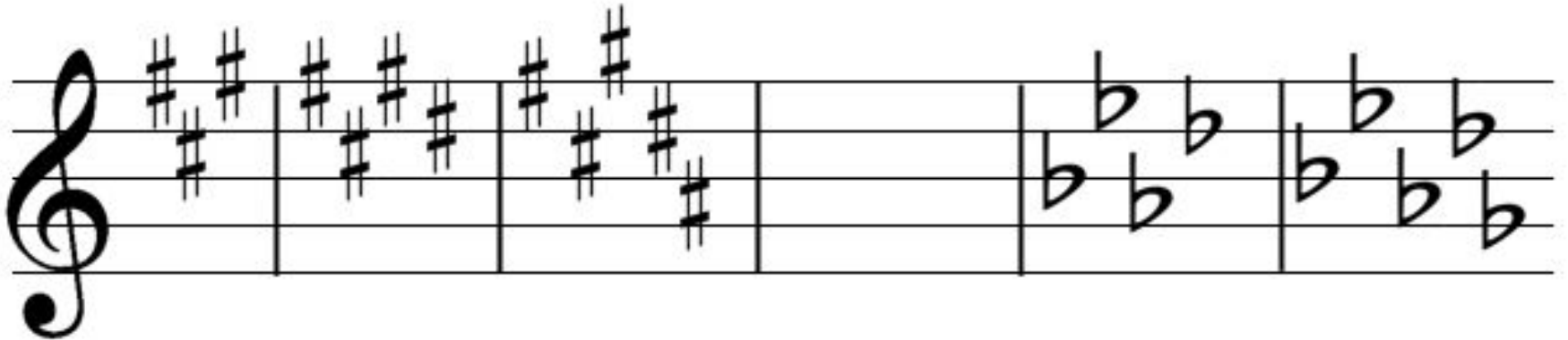
— — — — — — — —

Answers:

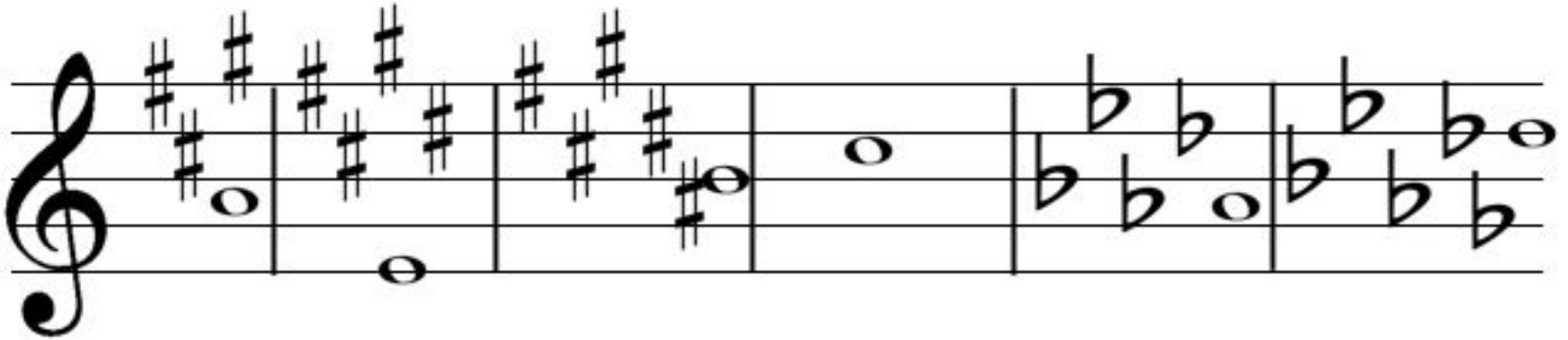
Musical notation for major chords with sharps. The notation is presented in two staves: a treble clef staff on top and a bass clef staff on the bottom. Each chord is represented by a vertical line with a key signature symbol (sharp) and the chord name. The chords are: C Major, G Major, D Major, A Major, E Major, B Major, F# Major, and C# Major. The bass clef staff shows the corresponding chord voicings with sharp signs above the notes.

Musical notation for major chords with flats. The notation is presented in two staves: a treble clef staff on top and a bass clef staff on the bottom. Each chord is represented by a vertical line with a key signature symbol (flat) and the chord name. The chords are: F Major, Bb Major, Eb Major, Ab Major, Db Major, Gb Major, and Cb Major. The bass clef staff shows the corresponding chord voicings with flat signs below the notes.

For this review, please do two things. First, identify which notes are sharp/flat then identify the key and where Do is supposed to go



Answers:



F_C_G_

Key of A

F_C_G_D_

Key of E

F_C_G_D_A_

Key of B

none_

Key of C

B_E_A_D_

Key of A^b

B_E_A_D_G_

Key of D^b



Please don't forget this acronym, it can be helpful for identifying key signatures quickly if the method in the video is too confusing.

Sharps:

Go Dig And Eat Big [#]Fat [#]Clams

Flats:

Frank ^bBrown ^bEats ^bApple ^bDumplings ^bGrandma ^bCooked

*notice that almost all the flat keys have a “flat” in the name, while most of the sharp keys don't



Please use the website below to do some extra practice. This time, select exercises, then Key Signature Identification. You should be able to add the remaining key signatures in the settings. If you feel comfortable identifying all 15 key signatures, try challenge mode!

[Music Theory-Key Signature Practice](#)



Extra Practice:

Teoria is another good site for extra practice. It's pretty comprehensive, and offers in depth knowledge into many music theory topics. The reading music section is helpful for this topic, but there are many other topics to explore.

[Teoria Theory Practice](#)